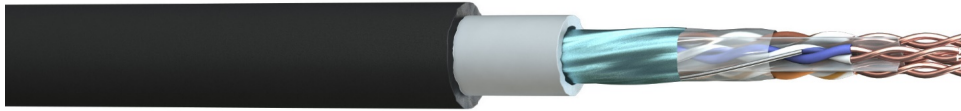


**Part No:** C6FD-F00  
**Description:** The TruLan Cat 6 F/UTP cable in a heavy Black PE jacket is the ideal choice for high speed data networks and is suitable for external applications and running through ducting due to its heavy PE outer sheath.

**TESTED TO  
500MHz**



### Construction

**Conductor** : Bare Copper  
**AWG** : 23(1)  
**Insulation Material** : High Density Polyethylene (HDPE)  
**Number of Pairs** : 4  
**Pair Identification** : Blue, Blue/White; Orange, Orange/White  
 : Green, Green/White; Brown, Brown/White  
**Drain Wire** : 24(1)AWG Tinned Copper  
**Overall Screen** : Aluminium Foil (100% Coverage)  
**Inner Sheath Material** : Polyvinyl Chloride (PVC)  
**Inner Sheath Colour** : Grey  
**Outer Sheath Material** : Polyethylene (PE)  
**Outer Sheath Colour** : Black



### Electrical Characteristics

**Max. Conductor Resistance @ 20°C** : ≤ 9.5 Ω/100m  
**Max. Resistance Unbalanced** : ≤ 2.5 %  
**Nominal Impedance (1-100MHz)** : 100 ± 15 Ω  
**Mutual Capacitance** : ≤ 5.6nF/100m  
**Capacitance Unbalanced to Earth** : ≤ 330 pF/ 100m  
**NVP** : 68.5 %  
**Max. Delay Skew** : ≤ 45 nS/ 100m  
**Voltage Rating EN 50525-1** : 450/750V\*  
**Test Voltage** : 2.5kV (AC)  
 \*Suitable for installation where Band II 450/750v cables are present. Not suitable for connection to mains supply

### Physical Characteristics

**Overall Diameter** : 10.0 ± 0.4mm  
**Bend Radius** : Fixed 4 x OD Flexing 8 x OD  
**Temperature Rating** : Fixed -20°C to 60°C Flexing -10°C to 60°C  
**Weight** : 105 kg/km

### Transmission Performance

Frequency	1	4	10	16	20	31.25	62.5	100	200	250	300	400	500	MHz
Attenuation	1.9	3.5	5.5	7.0	7.9	10.0	14.4	18.6	27.4	31.1	34.0	41.1	47.1	≤ dB
Return Loss	19.1	21.0	21.0	20.0	19.5	18.5	16.0	14.0	11.0	10.0	9.2	8.0	7.0	≥ dB
NEXT	65.0	64.1	57.8	54.6	53.1	50.0	45.1	41.8	36.0	35.3	34.0	31.9	30.4	≥ dB
PS NEXT	62.0	61.8	55.5	52.2	50.7	47.5	42.7	39.3	34.3	32.7	31.4	29.3	27.6	≥ dB
ACRF	64.2	52.1	44.2	40.1	38.2	34.3	28.3	24.2	18.2	16.2	14.6	12.1	10.2	≥ dB
PSACRF	61.2	49.1	41.2	37.1	35.2	31.3	25.3	21.2	15.2	13.2	11.6	9.1	7.2	≥ dB

### Standards

RoHS3 Compliance	: Yes	UV & Weather Resistance	: ISO 4892-3
CE Compliant	: LVD (2014/35/EU)	CPR Classification	: Fca (EN50575:2014+A1:2016)
Manufactured in accordance to	: TIA/EIA 568-C.2, ISO/IEC 11801		